

### APPLICATION:

Silos, deposits, multi-cell scales & weighbridges

### CAPACITY RANGE:

100kg – 300kg - 500kg - 1t - 2,5t - 5t  
10t - 20t - 30t

### MATERIAL:

Stainless Steel

### ENVIRONMENTAL PROTECTION:

IP68

### APPROVALS:

According to OIML - R60

### CHARACTERISTICS

Construction using stainless steel.  
The laser soldered closing protects from the typical environment in food and chemical industry.  
Mounting compatibility.

### APPLICATIONS

The CRI model is manufactured to maintain its performance capabilities in the environmental conditions existing in industries, where tasks and cleaning demand a good environmental protection.

### OPTIONS

Length of the cable is optional.

Hostile environmental cable.

ATEX option

EC-Type examination certificate

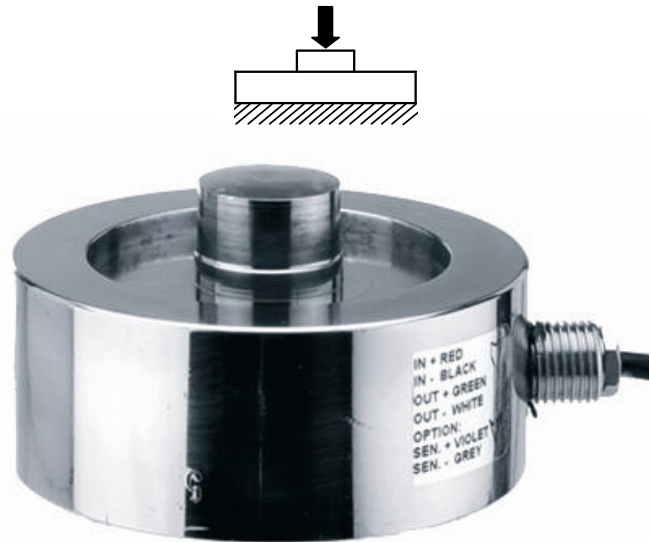
CEC 11 ATEX 040 X according directive 94/9/EC

II 1G EExia IIC T6 (Ta-0÷+40°C)  
TX (Ta-20÷+65°C)

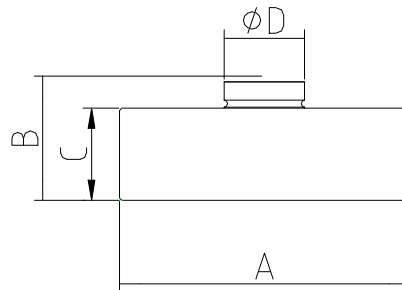
II 1D tD A20 TX°C (Ta-20÷+40°C)  
TX°C (Ta-20÷+65°C)

For more information look up the EC-type examination certificate, and documentation.

Consult for special requirements.

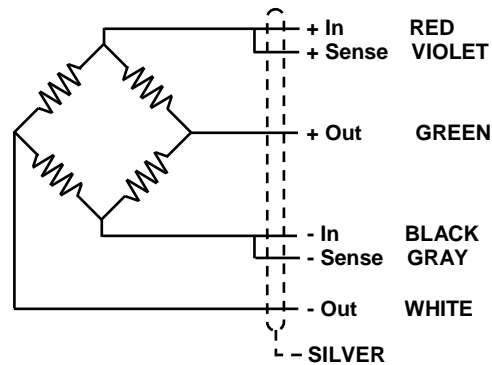


TEFLÓN® protects all the internal cables



Capacity (t)	ØA	B	C	ØD
0.5/ 1 /2.5 /5 /10	82	44	32	22
20/30	128	54	40	35

Dimensions in mm



## GENERAL TECHNICAL CHARACTERISTICS FOR $g = 9,8031 \text{ m/s}^2$

OIML Class	C3	UNITS
Divisions $n_{LC}$	3000	
Minimum Dead load $E_{min}$	0	kg
$Z = E_{max} / 2DR$	3000	
$Y = E_{max} / V_{min}$	10000	
Rated Capacity $E_{max}$	100 - 300 - 500 - 1000 - 2500 5000 - 10000 20000 - 30000	kg
Rated Sensitivity C	$2 \pm 0,1 \%$	mV/V
Rated Input Voltage	10	V dc
Input Voltage Range	5...15	V ac/dc
Input Resistance $R_{LC}$	$700 \pm 10$	$\Omega$
Output Resistance	$700 \pm 10$	$\Omega$
Zero Balance	$\pm 2$	% Emax
Insulation Resistance at 50 V DC	> 5000	M $\Omega$
Service Overload	> 150	% Emax
Overload Limit	> 300	% Emax
Temperature Range : Compensated	- 10 ... 40	$^{\circ}\text{C}$
: Operating	- 30 ... 85	$^{\circ}\text{C}$
: Storage	- 30 ... 90	$^{\circ}\text{C}$
Max. Nonlinearity	0,025	% Emax
Max. Hysteresis	0,015	% Emax
Max. No repeatability	0,01	% Emax
M Max. Creep in 4 hours	0,03	% Emax
Max. Zero Recovery Test in 1/2 hour	0,007	% Emax
Max Temperature effect : On Sensitivity	0,0013	% Emax / $^{\circ}\text{C}$
: On Zero	0,001	% Emax / $^{\circ}\text{C}$
Weight	600 - 1300	g
Cable Length	5 (0,1 to 10t) / 15 (20 to 30t)	m
Environmental Protection	IP68 - DIN 40050 (100h 1m)	



Ref: 491046  
Ref: 491055 (S. Steel)  
0,5t to 10t



Ref: 491049  
Ref: 491048 (S. Steel)  
20t to 10t



Ref: 491047A  
0,5t to 10t