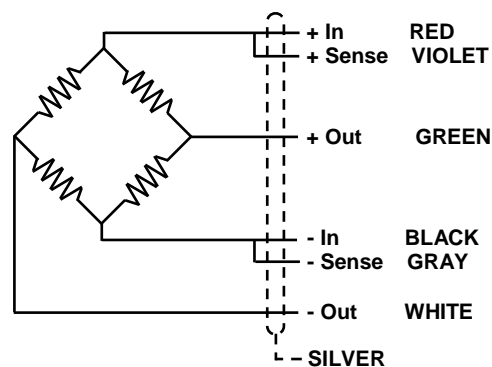


**TEFLÓN® protects all the internal cables**

Capacity	A	B	C
16 – 50T	73	44	150
60T	88,9	44	210
80T	88,9	64	210

*Dimensions in mm*



### APPLICATION:

Weighbridges and silos

### CAPACITY RANGE:

16t - 20t - 30t - 40t - 50t - 60t - 80t

### MATERIAL:

Stainless Steel 17- 4 PH

### ENVIRONMENTAL PROTECTION:

IP68

### APPROVALS:

CE 3000 & 4500 Div - E.04.02.C04

According to OIML - R60

### CHARACTERISTICS

Construction using stainless steel.  
The laser soldered closing protects from the typical environment in food and chemical industry.  
Mounting compatibility.

### APPLICATIONS

The CCI model is manufactured to maintain its performance capabilities in the environmental conditions existing in food industries, where tasks and cleaning demand stainless steel and a good environmental protection.

### OPTIONS

Length of the cable is optional.

Hostile environmental cable.

ATEX option

EC-Type examination certificate

CEC 11 ATEX 040 X according

directive 94/9/EC

**Ex** II 1G EExia IIC T6 (Ta2-0÷+40°C)  
TX (Ta-20÷+65°C)

**Ex** II 1D tD A20 TX°C (Ta-20÷+40°C)  
TX°C (Ta-20÷+65°C)

For more information look up the EC-type examination certificate, and documentation.

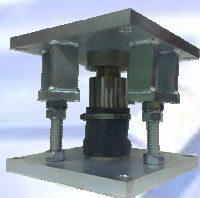
Consult for special requirements.

## GENERAL TECHNICAL CHARACTERISTICS FOR $g = 9,8031 \text{ m/s}^2$

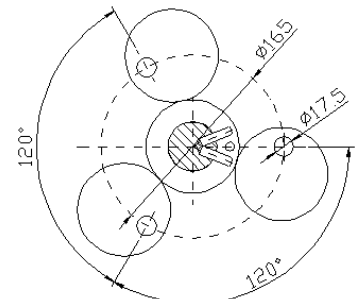
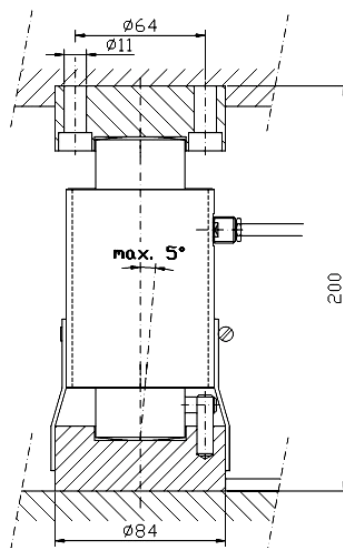
OIML Class	C3 - C4,5	UNITS
Divisions $n_{LC}$	3000 - 4500	
Minimum Dead load $E_{min}$	0	kg
$Z = E_{max} / 2DR$	3000 - 4500	
$Y = E_{max} / V_{min}$	10000	
Rated Capacity $E_{max}$	16000 - 20000 - 30000 - 40000 50000 - 60000 - 80000	kg
Rated Sensitivity C	$2 \pm 0,1 \%$	mV/V
Rated Input Voltage	10	V dc
Input Voltage Range	5...15	V ac/dc
Input Resistance $R_{LC}$	$700 \pm 10$	$\Omega$
Output Resistance	$700 \pm 10$	$\Omega$
Zero Balance	$\pm 2$	% Emax
Insulation Resistance at 50 V DC	> 5000	M $\Omega$
Service Overload	> 150	% Emax
Overload Limit	> 300	% Emax
Temperature Range : Compensated	- 10 ... 40	$^{\circ}\text{C}$
: Operating	- 30 ... 85	$^{\circ}\text{C}$
: Storage	- 30 ... 90	$^{\circ}\text{C}$
Max. Nonlinearity	0,015	% Emax
Max. Hysteresis	0,015	% Emax
Max. No repeatability	0,01	% Emax
M Max. Creep in 4 hours	0,02	% Emax
Max. Zero Recovery Test in 1/2 hour	0,007	% Emax
Max Temperature effect : On Sensitivity	0,00097	% Emax / $^{\circ}\text{C}$
: On Zero	0,00116	% Emax / $^{\circ}\text{C}$
Weight	From 16t to 50t ~ 2221	g
Cable Length	15	m
Environmental Protection	IP68 - DIN 40050 (100h 1m)	



Ref: 491030



Ref: 491031



**ISO** 9001

