

# AM2



## APPLICATION:

Single point scales whose platform is up to 600mm x 700mm and bagging

## CAPACITY RANGE:

100kg - 300kg - 600kg

## MATERIAL:

Aluminium

## ENVIRONMENTAL PROTECTION:

IP66

## APPROVALS:

CE 3000 Div / E-09.02.C02

According to OIML - R60

## CHARACTERISTICS

Special aluminium construction, only 62mm high.

High quality protection with special silicones.

Overload top to 0,3mm.

42Nm torque with M8-12,9 screw.

Mounting compatibility.

## APPLICATIONS

The AM2 model is specially designed for platforms up to 600mm x 700mm with very low profile and is protected from environmental conditions that occur in industry and commercial premises.

Another application is the bagging, and weight control of small deposits.

## OPTIONS

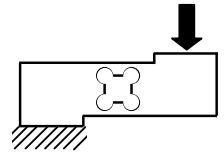
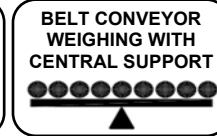
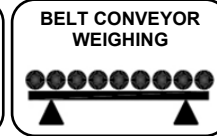
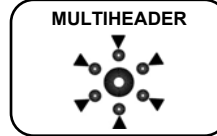
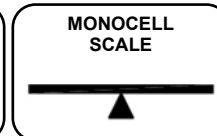
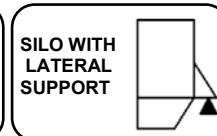
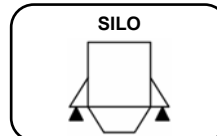
Consult for special requirements.

IP66

M

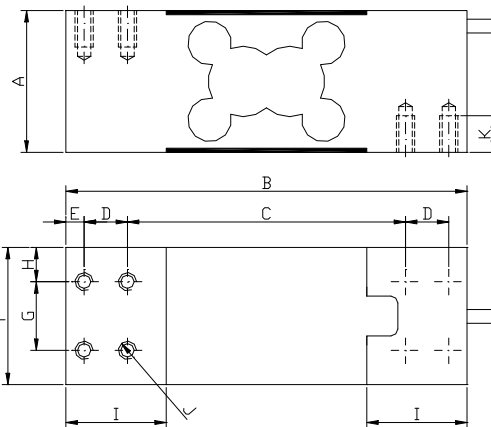
OIML

C3

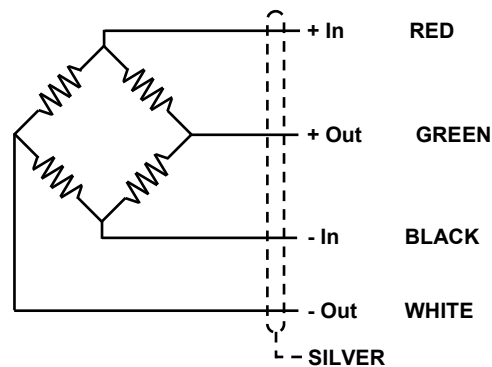


All the internal cables are protects

	A	B	C	D	E	F	G	H	I	J	K
mm	62	176	122	19	8	60	30	15	44	M8(X8)	25



Dimensions in mm



www.ascellsensor.com  
info@ascellsensor.com

Tel: (+34) 93 776 60 89  
Fax: (+34) 93 775 14 72

These specifications are subjected to changes, due to continuous improvement of the design.

ft\_en\_am2\_010212

## GENERAL TECHNICAL CHARACTERISTICS FOR $g= 9,8031 \text{ m/ s}^2$

OIML Class	C3	UNITS
Divisions $n_{LC}$	3000	
Minimum Dead load $E_{min}$	0	kg
$Z= E_{max} / 2DR$	3000	
$Y= E_{max} / V_{min}$	7500	
Rated Capacity $E_{max}$	100 - 300 - 600	kg
Rated Sensitivity C	$2 \pm 10 \%$	mV/V
Rated Input Voltage	10	V dc
Input Voltage Range	5...15	V ac/dc
Input Resistance $R_{LC}$	$410 \pm 15$	$\Omega$
Output Resistance	$350 \pm 7$	$\Omega$
Zero Balance	$\pm 2$	% $E_{max}$
Insulation Resistance at 50 V DC	> 5000	M $\Omega$
Service Overload	> 150	% $E_{max}$
Overload Limit	> 300	% $E_{max}$
Temperature Range : Compensated	- 10 ... 40	$^{\circ}\text{C}$
: Operating	- 30 ... 85	$^{\circ}\text{C}$
: Storage	- 30 ... 90	$^{\circ}\text{C}$
Max. Nonlinearity	0,02	% $E_{max}$
Max. Hysteresis	0,02	% $E_{max}$
Max. No repeatability	0,01	% $E_{max}$
M Max. Creep in 4 hours	0,03	% $E_{max}$
Max. Zero Recovery Test in 1/2 hour	0,011	% $E_{max}$
Max Temperature effect : On Sensitivity	0,0013	% $E_{max} / ^{\circ}\text{C}$
: On Zero	0,0014	% $E_{max} / ^{\circ}\text{C}$
Weight	1700	g
Cable Length	2	m
Environmental Protection	IP66 - DIN 40050	